



Georgia Department of Public Health

Reducing Overweight and Obesity: Worksite Health Initiatives and Strategies in Georgia

Jean O'Connor, JD, DrPH, FACHE

Jean.OConnor@dph.ga.gov

Southern Obesity Summit

October 2017



We Protect Lives.

Staff Teams and Programs



Adolescent and School Health

- Asthma Control Program
- Adolescent Health and Youth Development
- Teen Pregnancy Prevention/PREP
- Sexual Violence Prevention
- Youth Tobacco Prevention

Prevention, Screening and Treatment

- Cancer State Aid Program
- Breast and Cervical Cancer Screening
- HBOC Genomics
- Health Systems Change/Quality Improvement
- Diabetes Self-Management and Education
- Colorectal Cancer Screening
- Tobacco Quitline

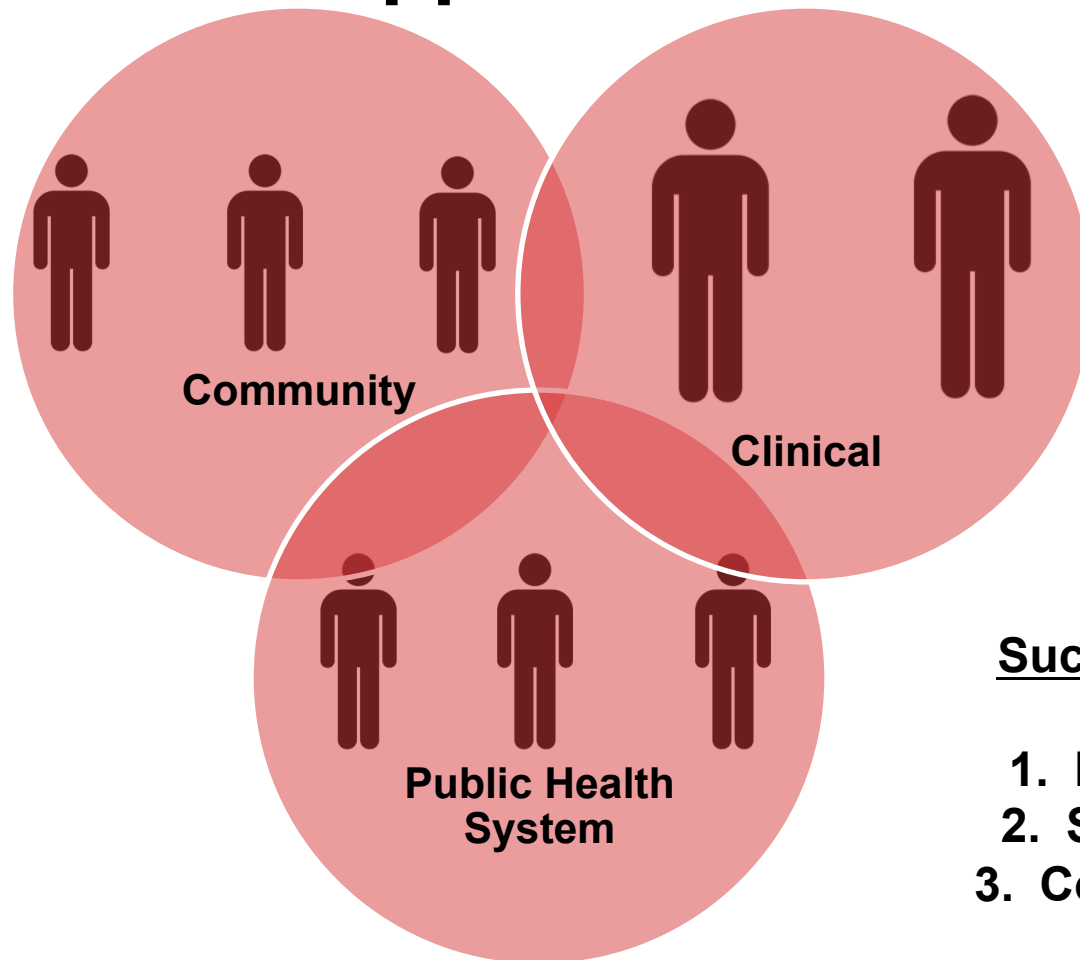
Community Policy, Systems and Environmental Change

- Tobacco-Free and Smoke-Free Places
- Nutrition
- Physical Activity
- Worksite Wellness
- Adult Heart Disease
- Working with Faith-Based Organizations

Planning and Partnerships

- District Communications Coordination
- Comprehensive Cancer and Control Planning
- Healthy Communities
- Health Equity
- Chronic Disease Council
- Chronic Disease University

Support the Creation of Healthier Communities through Collective Impact Approaches



Success Factors

1. Partnerships
2. Shared Goals
3. Communication

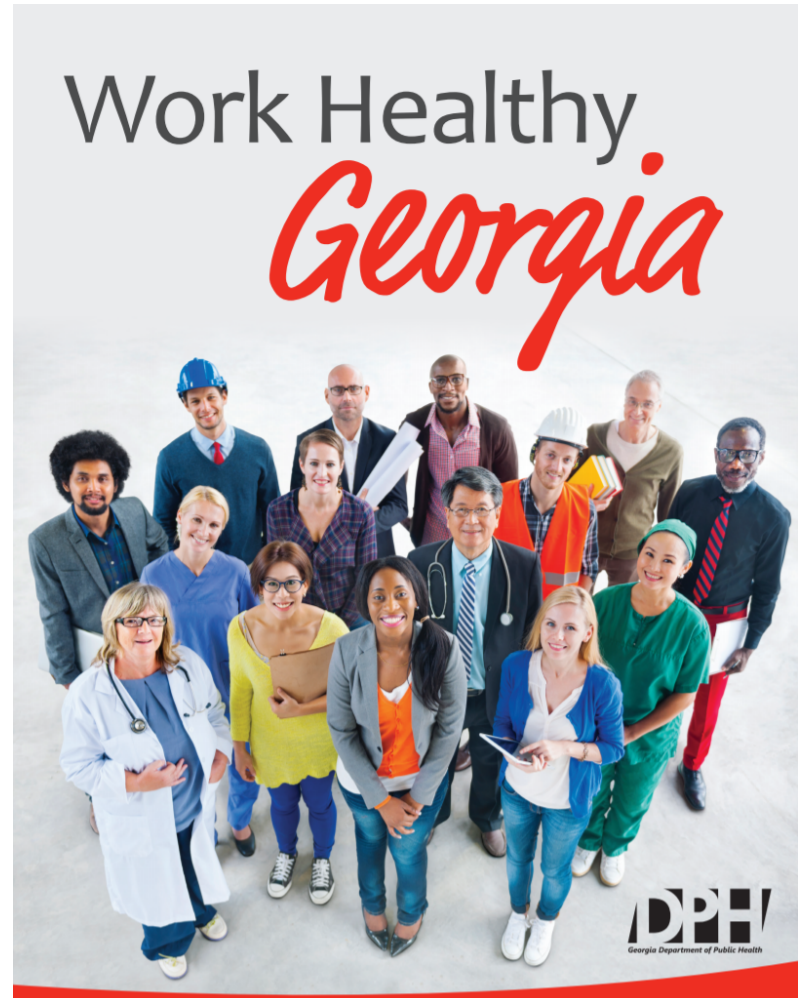
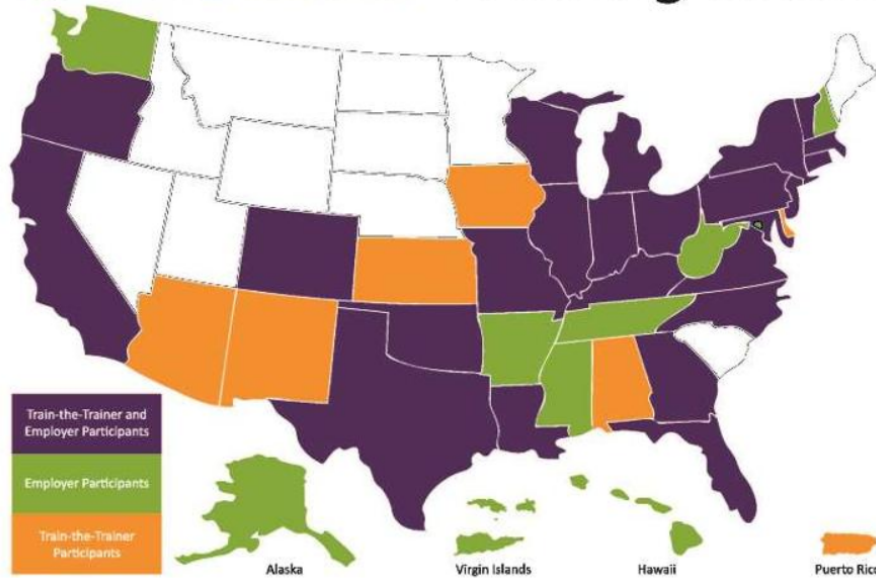
Health Worksite Approach at DPH

- Bronze Level Accreditation from HealthLead™
- The HealthLead™ milestones are organized around three key areas: (1) Organizational Engagement and Alignment, (2) Population Health Management and Well-being, and (3) Outcomes Reporting.
- Other organizations that have achieved the same level of accreditation as DPH are the North Dakota Department of Public Health, the Centers for Disease Control and Prevention, City of Dublin, Ohio, and Monterey County, California.



Resources and Support for Worksites

 **work@health** Training Reach



We Protect Lives.

Georgia SNAP-Ed Funded Health Districts and Projects

5-1 South Central

Laurens:

- ▶ Dublin City Hall
- ▶ Saxon Heights Elementary

8-2 Southwest

Dougherty:

- ▶ Bill Miller Community Center
- ▶ Carver Sports Complex
- ▶ Boys & Girls Club
- ▶ Girls Inc.

Georgia Institute of Technology Lowndes:

- ▶ CJB Industries Inc.
- ▶ Langdale Forest Products

Montgomery:

- ▶ Montgomery County Government

Toombs:

- ▶ Robin Builders, Inc.
- ▶ Savannah Luggage Works
- ▶ Thai Union Chicken of the Sea Canning & US Pet Co.

9-2 Southeast

Ware:

- ▶ Concerted Services
- ▶ Childer's Family YMCA
- ▶ Center Elementary School (Heritage Gardens of Waycross)

Tattall:

- ▶ Telamon Corporation
- ▶ Tattall County Library
- ▶ Heritage Gardens of Tattall

3-3 Clayton

- ▶ Clayton County Headstart
- ▶ Clayton County Board of Health (Forest Park)
- ▶ Paradise Community Development Corporation

6 East Central

Richmond:

- ▶ CSRA Economic Opportunity Authority, Inc.
- ▶ Augusta Parks & Recreation Department
- ▶ Icebox Urban Farms
- ▶ Richmond County Health Department Teaching Gardens
- ▶ The Incubator Gardens at the Clubhouse
- ▶ The Master's Table Teaching Gardens
- ▶ The Blueberries for Ms. Willie Initiative (Harrisburg community)

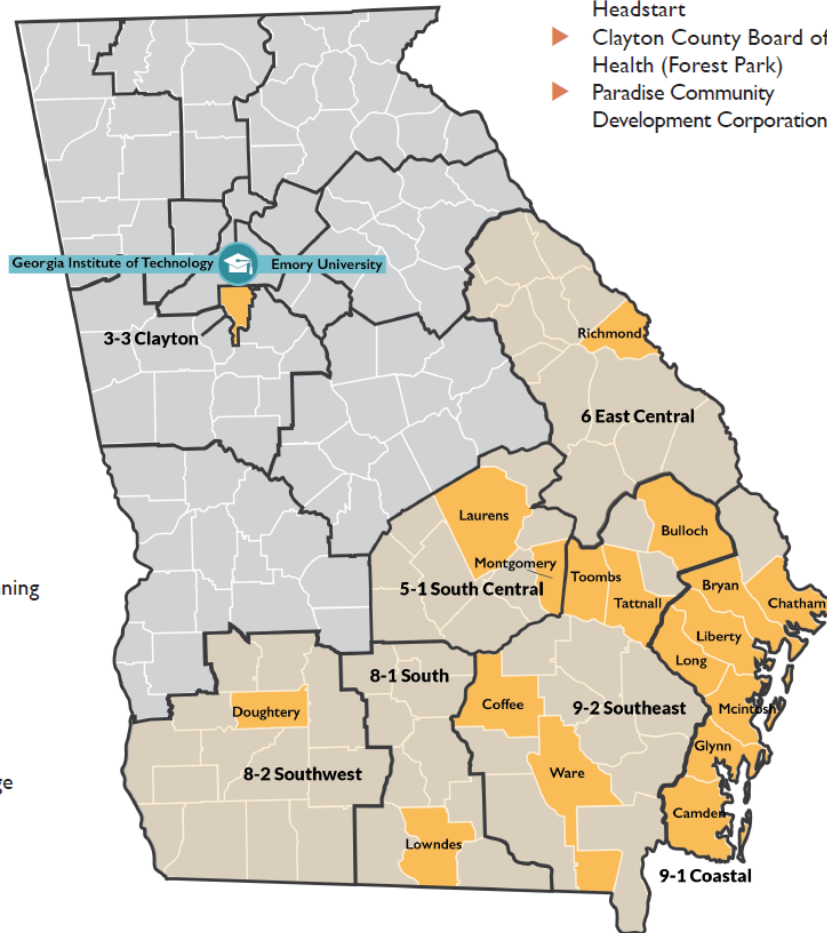
9-1 Coastal

Chatham:

- ▶ Enmarket
- ▶ Alfred E. Beach High School
- ▶ Robert W. Groves High School

Glynn:

- ▶ Coastal Georgia Area Community Action Authority, Inc.



Project

- ▶ Worksite & Harvest of the Month
- ▶ Community Garden & Pick It Try It

